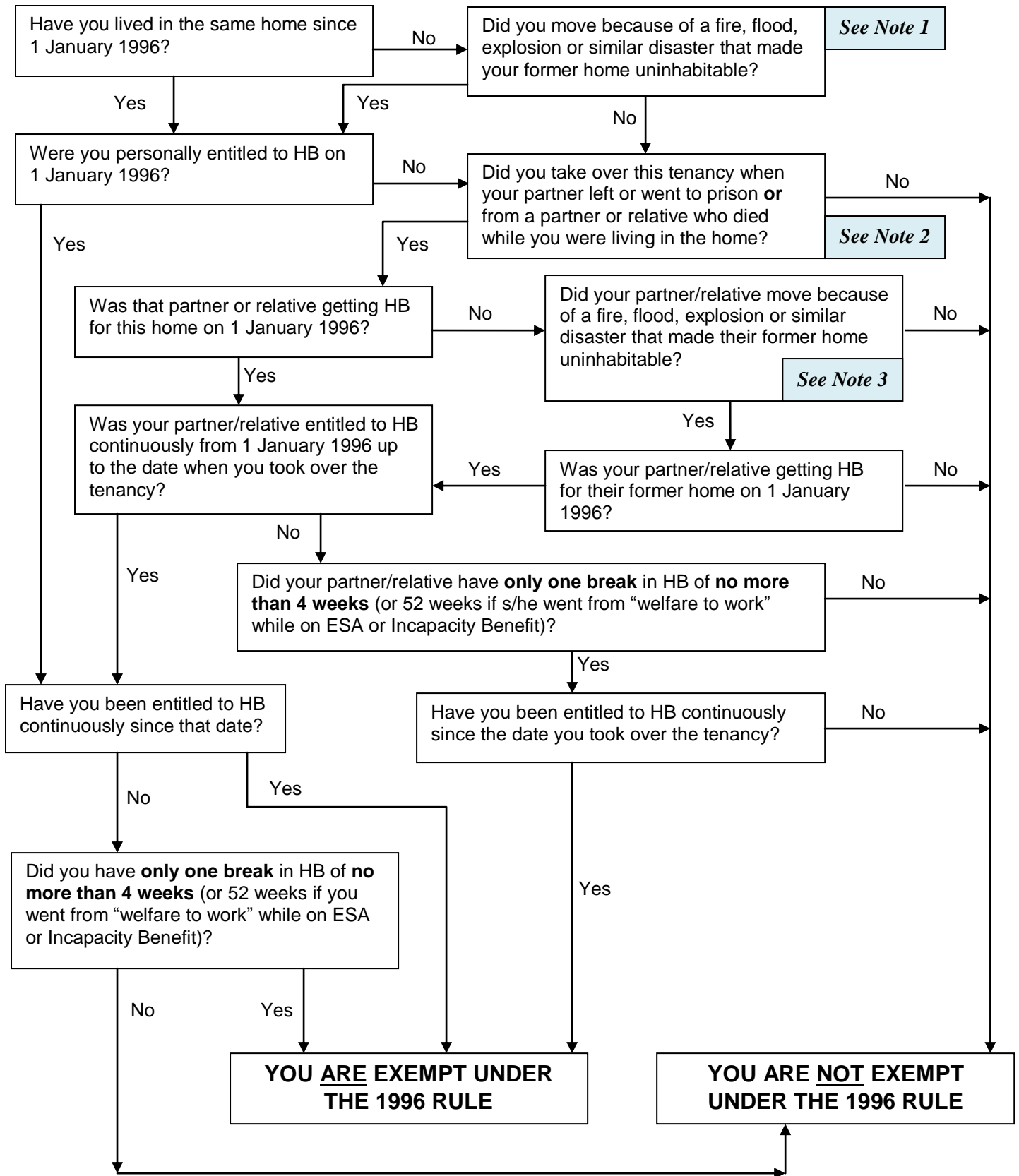


EXEMPTION FROM MAXIMUM RENT (SOCIAL SECTOR) UNDER 1996 RULE



Note 1	<i>More than one move for any of these reasons is allowed</i>
Note 2	<i>If the partner/relative from whom you took over the tenancy also took over the tenancy from an earlier partner/relative, this is allowed as long as there has been no more than one 4w/52w break in the continuous HB entitlement of all successive tenants: not one break each</i>
Note 3	<i>More than one move for any of these reasons is allowed</i>